



06

AMBULATORY BLOOD PRESSURE MONITOR

Introduction:

Ambulatory Blood Pressure Monitor is a noninvasive oscillometric BP monitor which can record at least 24 hours. It is intended for use as an aid or adjunct to diagnosis and treatment when it is necessary to measure an adult patient's systolic pressure and diastolic pressure during an extended period of time. The associated PC-based program provides display, data storage, analysis and report printing functions.



DMS

- FDA certified
- CE certified
- ISO13485 certified

Software:

Functions and Features



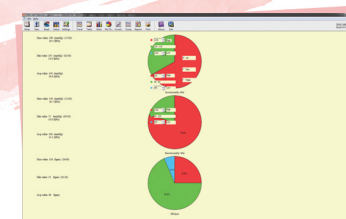
Tendency Chart



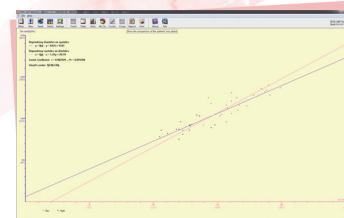
Histogram



Comparison Diagram



Pie Chart



Fitting Line

INNOVATION
and
EXPERIENCE



Hardware:

DMS300-ABPM



Method of Measurement:	Oscillometry with step deflation
Display:	LCD for measurement Procedure
Systolic BP range:	40-260mmHg
Diastolic BP range:	20-210mmHg
Blood Pressure Range:	20mmHg ~ 260mmHg
Pulse Frequency:	40-200bpm
Accuracy:	±3mmHg
Data storage:	Flash memory to store up to 300 readings
Security System:	Maximum limit inflation pressure to 290 MMHG, automatically open the safety valve when power off, the longest BP measurement time limited to less than 180 seconds
Measurement Interval:	5, 10, 15, 20, 30, 45, 60, 90, 120 min (Adjustable)
Power:	DC 3.0V; 2xLR06/AA Alkaline batteries
Dimensions:	Approximately 118mm×67mm×29mm
Weight:	Approximately 210g (including batteries)
Intended usage specs:	Temperature: 5 °C ~ 40 °C; Relative humidity: 10% ~ 95%; Atmospheric pressure: 700 ~ 1060 hPa
Storage and Transport Conditions:	Temperature: -20 °C ~ 55 °C; Relative humidity: 15% ~ 95%; Atmospheric pressure: 700 ~ 1060 hPa
Data Connector:	USB Interface

ABP Mobile software

DMS-WBP02

Automatic 24h BP Measurement;
Small, portable and good-shaped, used together with mobile, simple operation.
Automatic re-measurement;
Wireless bluetooth transfer to mobile.
Android mobile showed real-time data directly.
BP Alarm automatically
Also show Data statistics, trend chart etc on the mobile software.

Method of Measurement:	Oscillometry with step deflation
Systolic BP range:	40-260mmHg
Diastolic BP range:	20-210mmHg
Blood Pressure Range:	20mmHg ~ 260mmHg
Pulse Frequency:	40-200bpm
Resolution:	BP: 1mmHg; Pulse Frequency: 1BPM
Repeatability:	Continuous low pressure in the static mode, every bit of repeated readings are not more than 4 mmHG
Accuracy:	BP: ±3mmHg, Pulse Frequency: ±3BPM
Power:	One piece 3.7 v lithium-ion battery
Data storage:	Flash memory to store up to 100 readings
Security System:	Maximum limit inflation pressure to 290 MMHG, automatically open the safety valve when power off, the longest BP measurement time limited to less than 180 seconds
Measurement Interval:	15, 30, 45, 60, 90, 120 min
Intended usage specs:	Temperature: 5 °C ~ 40 °C; Relative humidity: 10% ~ 95%; Atmospheric pressure: 700 ~ 1060 hPa
Storage and Transport Conditions:	Temperature: -20 °C ~ 55 °C; Relative humidity: 15% ~ 95%; Atmospheric pressure: 700 ~ 1060 hPa
Data Transfer:	Wireless bluetooth transfer.

ABP PC software



socimed

VENTE DE CONSOMMABLES ET D'APPAREILS MÉDICAUX

Tel. +331 49 98 86 72 - socimed@socimed.com



Recording time	More than 24 hours
Recording interval	5, 10, 15, 20, 30, 45, 60, 90, 120 min adjustable
Measurement method	Oscillometry with step deflation
Storage medium	Nonvolatile flash memory could save up to 460 times measurements.
LCD display	Display systolic pressure, diastolic pressure, pulse and working status information
Data connection	USB (RS-232 optional)
Dimension	116mm x 70mm x 40mm
Weight	252g (including batteries)
Power	Two AA alkaline batteries or high capacity rechargeable batteries (NiMH)
Operating conditions	Temperature: 10°C to 40°C Humidity: 30-80%
Calibration	Once every 2 years
Storage conditions	Temperature: -20°C to 55°C Humidity: 15-93%
Main performance	<ol style="list-style-type: none"> 1, Blood Pressure Range: 20mmHg ~ 260mmHg 2, Measurement time: less than 180 seconds each time, more than 24 hours continuously 3, Automatic re-measurement and automatic return-to-zero 4, Overpressure protection: Auto release when pressure exceeds 300mmHg 5, Power-down-relief protection: Auto release even taking out batteries when inflating. 6, Power-down-data protection: data will not be lost even taking out batteries during recording.



DMS-ABP

Measurement method	Oscillometry with step deflation
Display	LCD for measurement Procedure
Blood Pressure Range	20mmHg~260mmHg
Test Memory	up to 460 times complete measurements
Test Duration	Patient dependent-- less than 180 seconds
Power	DC 3.0V, 2xLR06/AA Alkaline batteries
Dimensions	Approximately 116 x 70 x 40 mm
Weight	Approximately 252g (including batteries)
Data Connector	USB Interface
Cuff	Small Adult Eclipse D-ring Cuff (with air tube) Model: 21-29cm Adult Eclipse D-ring Cuff (with air tube) Model: 28-37cm Large Adult Eclipse D-ring Cuff (with air tube) Model: 36-46cm



DMS300-ABP

Accessories:



ABP Cuff (S)



ABP Cuff (M)



ABP Cuff (L)

INNOVATION
and
EXPERIENCE

